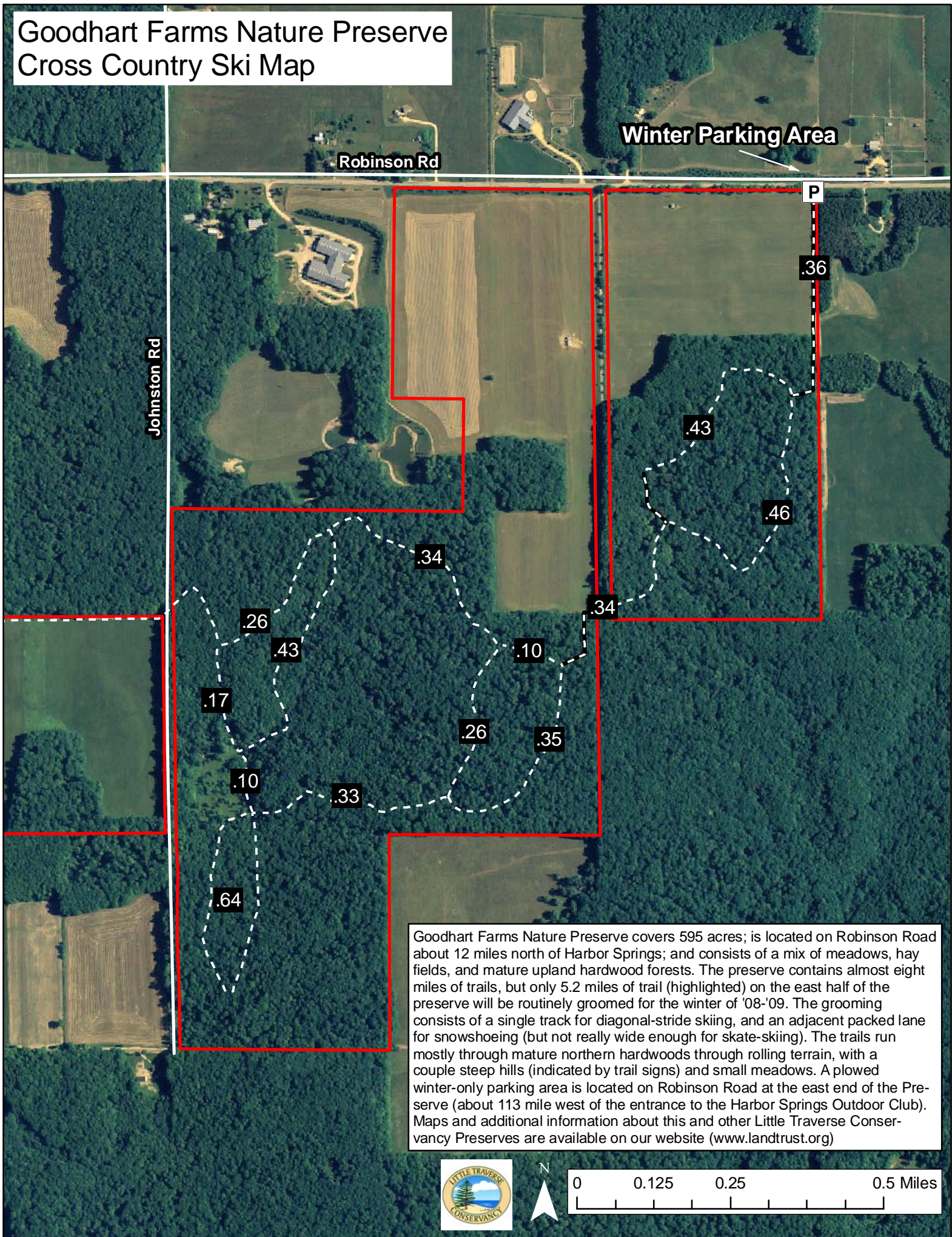


Goodhart Farms Nature Preserve Cross Country Ski Map



Winter Parking Area

Robinson Rd

Johnston Rd

P

.36

.43

.46

.34

.34

.26

.43

.10

.17

.26

.35

.10

.33

.64

Goodhart Farms Nature Preserve covers 595 acres; is located on Robinson Road about 12 miles north of Harbor Springs; and consists of a mix of meadows, hay fields, and mature upland hardwood forests. The preserve contains almost eight miles of trails, but only 5.2 miles of trail (highlighted) on the east half of the preserve will be routinely groomed for the winter of '08-'09. The grooming consists of a single track for diagonal-stride skiing, and an adjacent packed lane for snowshoeing (but not really wide enough for skate-skiing). The trails run mostly through mature northern hardwoods through rolling terrain, with a couple steep hills (indicated by trail signs) and small meadows. A plowed winter-only parking area is located on Robinson Road at the east end of the Preserve (about 113 mile west of the entrance to the Harbor Springs Outdoor Club). Maps and additional information about this and other Little Traverse Conservancy Preserves are available on our website (www.landtrust.org)

